



VTS TF Air Systems Pvt. Ltd.,
#2150, Unitus Shakti Rise, 2nd floor, 17th Main,
2nd Cross, HAL 2nd Stage, Indiranagar
Bangalore – 560008
phone: +91.080.22716202
e-mail: sales-india@vtsgroup.com

Logistic Centre – South
VTS TF Air Systems Pvt. Ltd.
Survey # 13/1, Kanekalu, Devanagondhi post,
Hosakote Taluk, Bangalore - 560067
Tel.:+91.80.22716202

Regional Offices:

Mumbai, Ahmedabad, Pune, Chennai, Hyderabad, Kochi, Delhi, Kolkata

www.vtsgroup.com



VTS BIM
2017

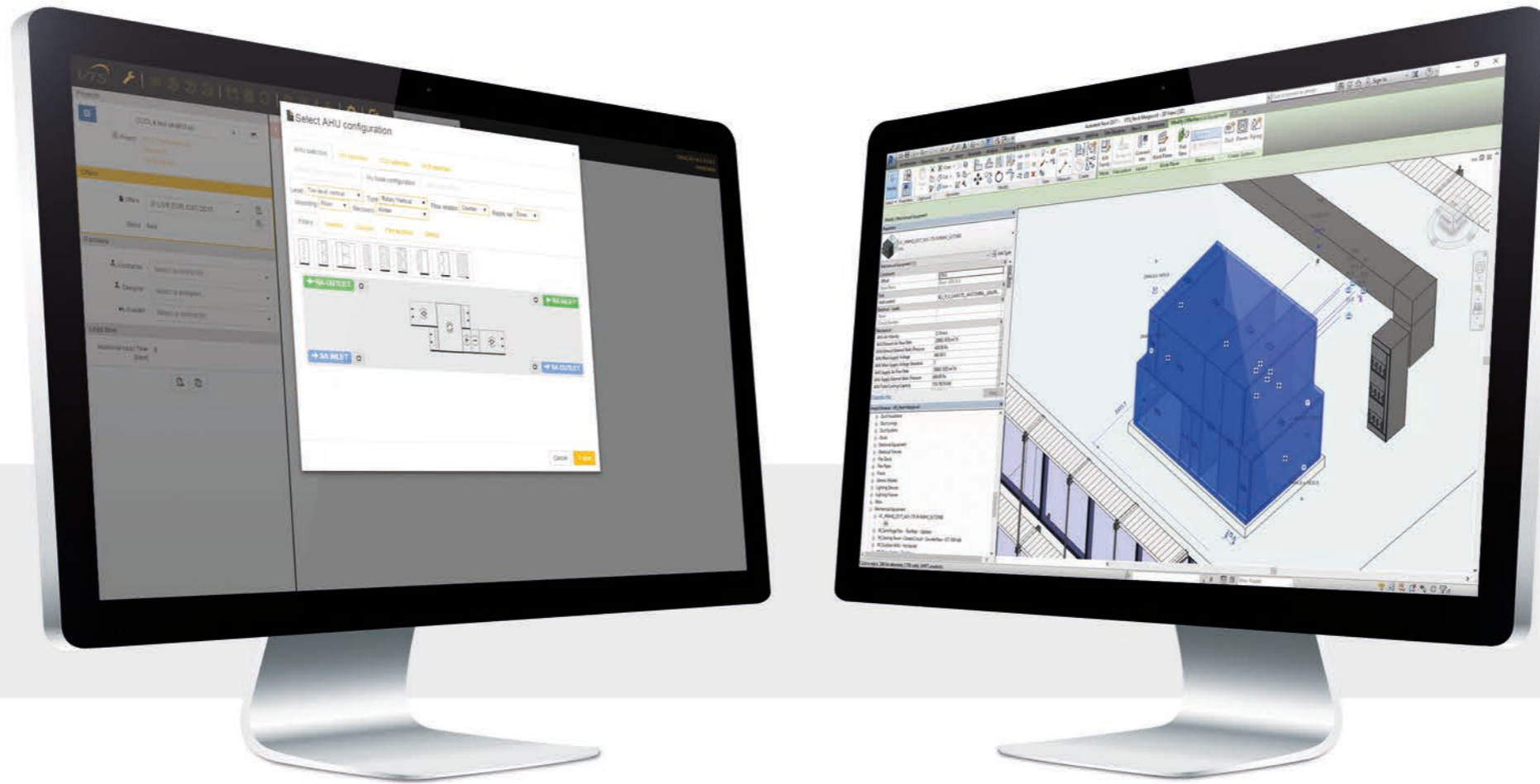


Online digital models
of **VTS** air handling units.
powered by **ClimaCAD OnLine 4.0**

www.vtsgroup.com

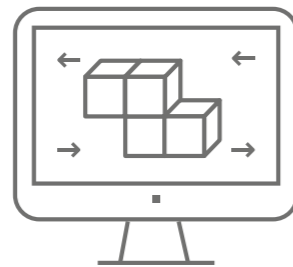
VTS **BIM** - a new approach to digital models of air-handling units

VTS has created the possibilities of generating digital models of VENTUS VS and American VENTUS air-handling models on-line. This is possible thanks to the implementation of a new ClimaCAD OnLine 4.0 selection tool, equipped with .rfa (Revit®) files generator.



The release of so called families for the Autodesk Revit® environment by VTS makes it easier to design agencies to model the building installations on the basis of using the same platform. At present the on-line generator is a unique solution in BIM environment. It enables the generation of a VENTUS air-handling unit model practically in no time in any configuration and with any parameters.

The process of model generation comes down to the following **3 steps**:



1

Login to CCOL 4.0

Login to the CCOL 4.0 using the following web address:

www.ccol4.com

2

Unit configuration

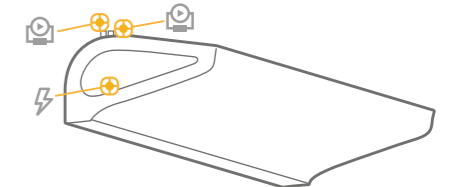
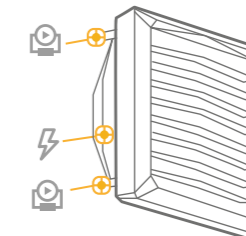
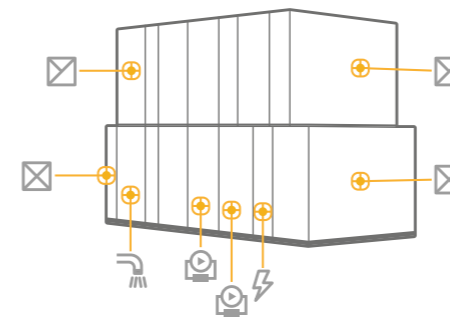
Use the intuitive selection tool to select your Air Handling Unit and set its working parameters to fit given project demands.

3

Data export to .rfa file

In order to generate a model in .rfa file, it is enough to enter the name and surname plus the email address of the person dedicated to receive the file. The system will automatically send a link to download the model. The entire process last approximately 15 minutes.

As a result, the client receives:



The generated objects contain parametrized connectors:

- » air systems,
- » hydraulic systems,
- » sanitary systems,
- » electric systems,

as well as the complete dimensional data, the device maintenance zone and the service (repair) zone.

VTS also provides digital models of WING air curtains and VOLCANO air heaters.

The models contain:

- » parametrized electric and hydraulic connectors,
- » mount options vertically and horizontally,
- » presentation of the range of air stream,
- » parameter of any inclination angle of an air heater in relation to the horizontal plane.

Models can be downloaded from:

<http://vtsgroup.in/vtsbim.html>